

WOODSIDE



Elevation 2 with stone

For more information please call **Joseph Rubin, Associate Broker, Long & Foster Realtors**
(301) 718-8010 • Office (301) 907-7600 • joe.rubin@longandfoster.com



WOODSIDE



Elevation 1 with stone



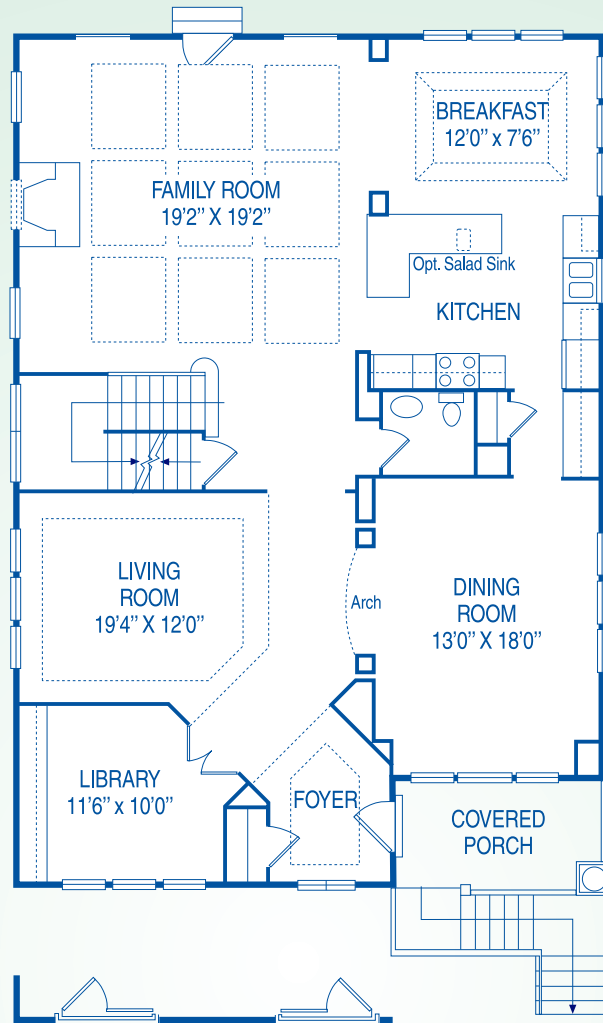
Elevation 1 with brick



Elevation 2 with brick

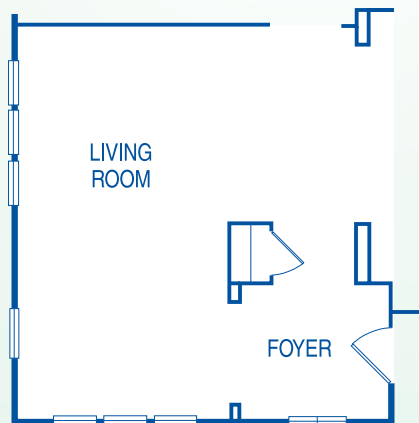


*First Floor
Elev. #1*



Elev. #2

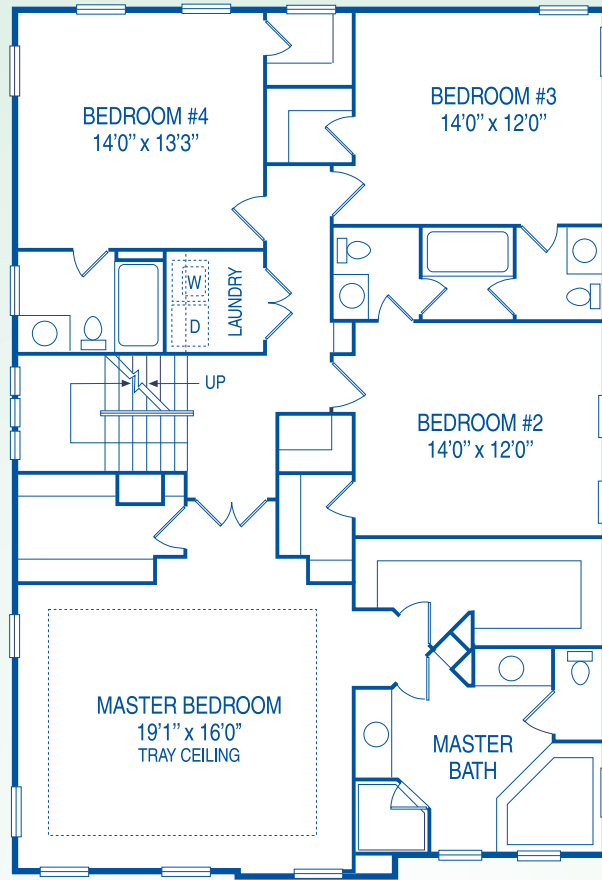
*Alternate
without
Library
Elev. #1*



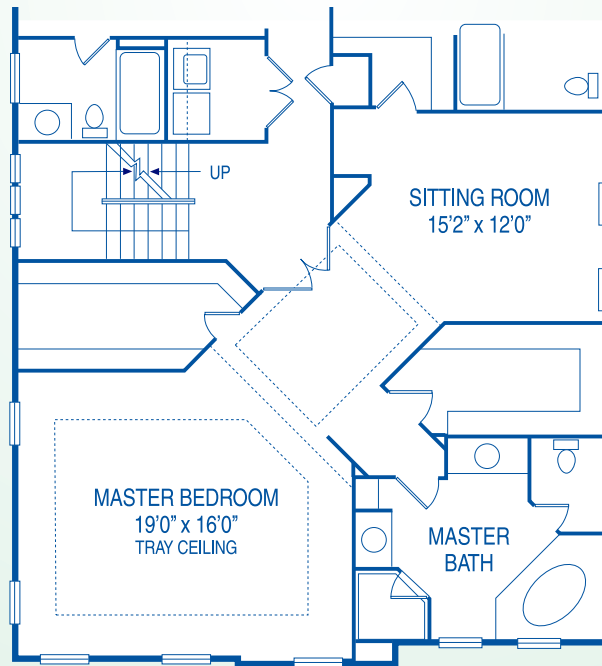
*Alternate
without
Library
Elev. #2*



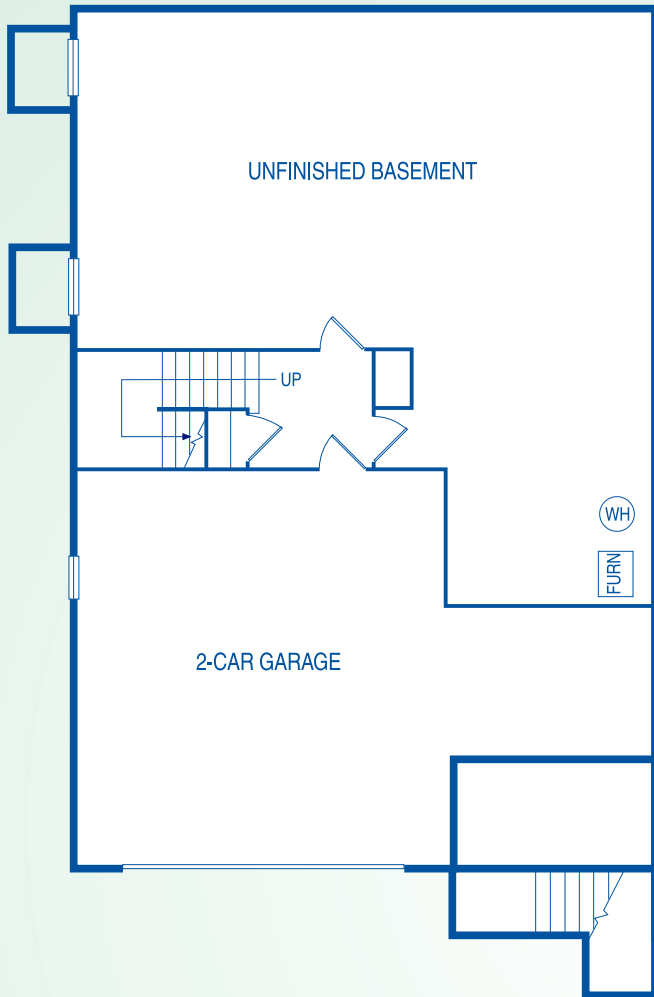
*Standard
Second Floor*



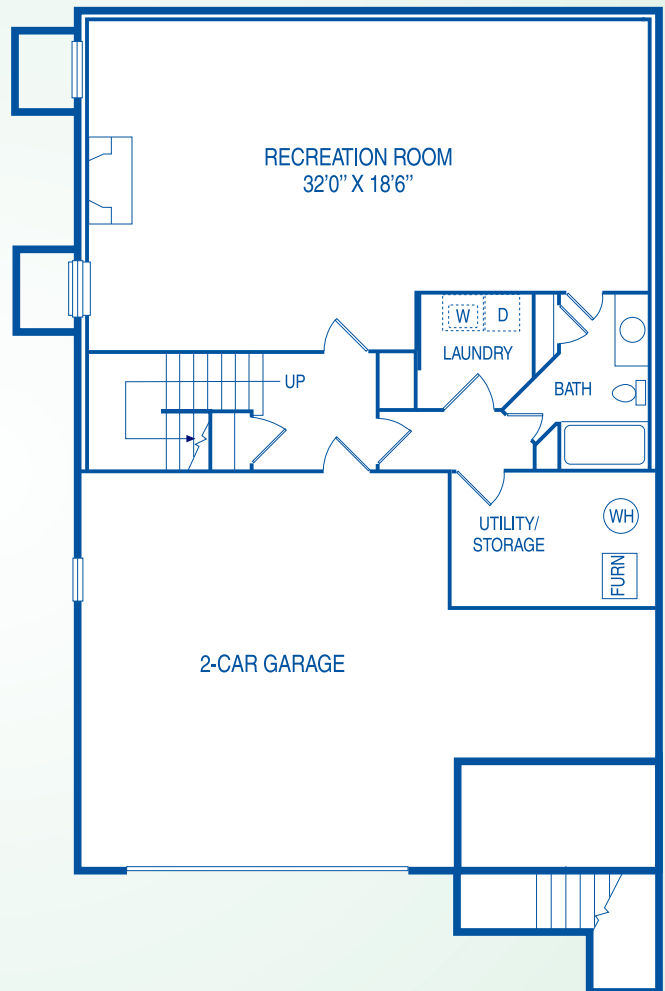
*Standard
Second Floor
w/alternate
Sitting Room*



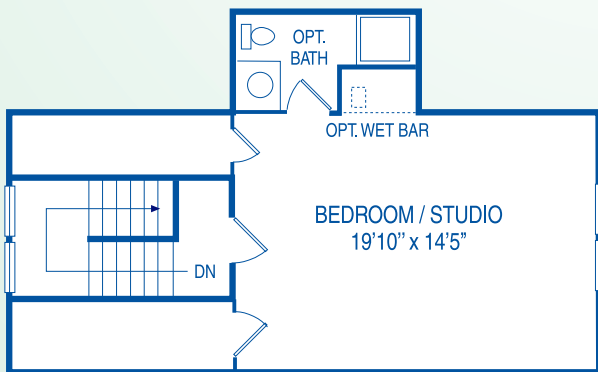
Unfinished Lower Level



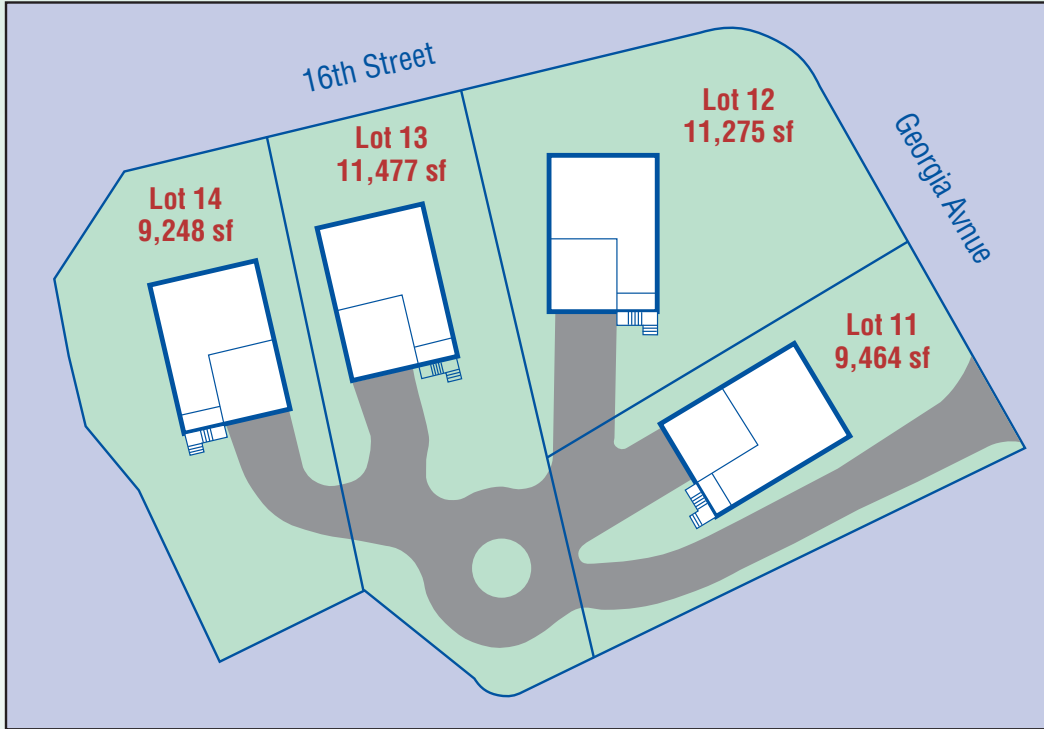
Optional Finished Lower Level



Upper Level



Site Map



Location Map





By GBI

Luxury Standard Features

- Five spacious bedrooms
- 4-1/2 baths
- Two-car garage
- Three finished levels with available finished lower level
- Covered front porch with column
- Ten foot ceilings on first floor
- Semi-solid interior doors
- Tray ceiling in master bedroom, living room, foyer and breakfast room
- Coffered ("beamed") family room ceiling
- Master bath with soaking tub and separate ceramic tiled shower
- Ceramic tile floors in full baths with ceramic tile tub/shower surrounds
- Elegant "Adams" door and window casing throughout
- Three-piece crown moulding in living room and foyer
- Chair rail and three-piece crown moulding in dining room
- Hardwood floors throughout first floor
- Gas fireplace in family room with painted mantel
- Brick or stone accents on front elevation and entry stoop
- Insulated front door
- 42" maple raised panel kitchen wall cabinets
- Granite countertops with undermount stainless steel sink
- Recessed lighting package
- Kitchen island
- General Electric stainless steel appliances
- 25 cu. ft. side-by-side refrigerator with icemaker and water
- Six cycle dishwasher
- 30" sealed burner gas cooktop with precise simmer feature
- Built-in self-cleaning double wall oven
- Spacemaker microwave oven with "convenience cooking"
- Breakfast room
- Second floor laundry room
- Two zone gas heating and electric air conditioning
- Data/phone/cable wiring and security prewire
- Fire protection sprinkler system
- 200 amp electric service
- Copper water pipes
- Energy efficient gas heating and hot water
- 2-10 HBW homeowners protection plan

About the Builder

Since 1978, GBI Corporation has built nearly 1,000 homes throughout Northern Virginia. This homebuilding expertise, along with strong financial capability, a continuing commitment to quality workmanship, and dedication to prompt customer service, are the ingredients of GBI Corporation's success.

Among the communities GBI Corporation has built or developed are:

- Maple Court, Falls Church, Virginia
- Country Club Grove, Arlington, Virginia
- Westvale Woods, Fair Oaks, Virginia
- Green Gables, Falls Church, Virginia
- Longfellow Street, McLean, Virginia
- Sunny View, Alexandria, Virginia
- Walker's Hill, McLean, Virginia
- Timber Knoll, Herndon, Virginia
- Walden of McLean, McLean, Virginia
- St. John's, McLean, Virginia
- Island Creek, Alexandria, Virginia
- Gunston Square, Lorton, Virginia
- Ashmere, Montclair, Virginia
- Stockbridge, Montclair, Virginia
- New Alexandria, Alexandria, Virginia
- Mosby Ridge, Fairfax City, Virginia
- Sutton Oaks, Chantilly, Virginia
- Innisfree, Springfield, Virginia
- Fallsmere, Falls Church, Virginia
- Kings Grove, Burke, Virginia
- Somerset, Vienna, Virginia

GBI Corporation is a member of the Northern Virginia Building Industry Association, the NVBIA Custom Builders Council and the National Association of Homebuilders.



Plans, specifications, dimensions, fenestration and landscaping shown and described are subject to change without notice.
All dimensions are approximate. September 2, 2004.